

DIRECTION AND ADMINISTRATION

Director-1 (Rs 14300-18300)

Old Pay Scales

→ **Deputy Director Central-1 (Rs 10000-15200)**

→ **Deputy Director M&E-1 (Rs 10000-15200)**

→ **Agriculture Economist-1 (Rs 10000-15200)**

→ **Plant Protection Officer-1 (Rs9000-14100)**

→ **Astt. Director P&S-1 (Rs 7500-12000)**

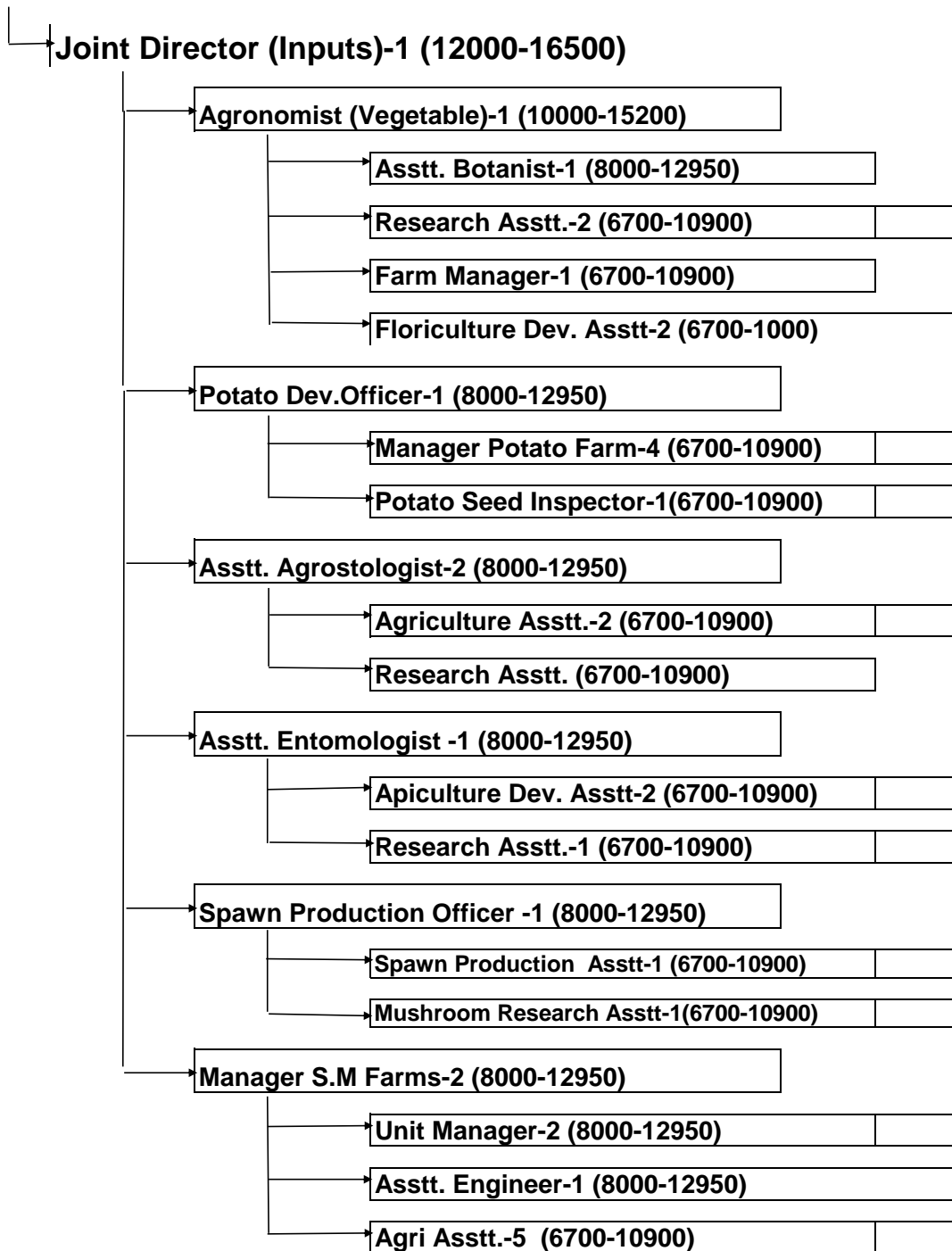
→ **Accounts Officer-1 (Rs 7500-12000)**

→ **Agri. Asstt. Information-1 (Rs6700-10900)**

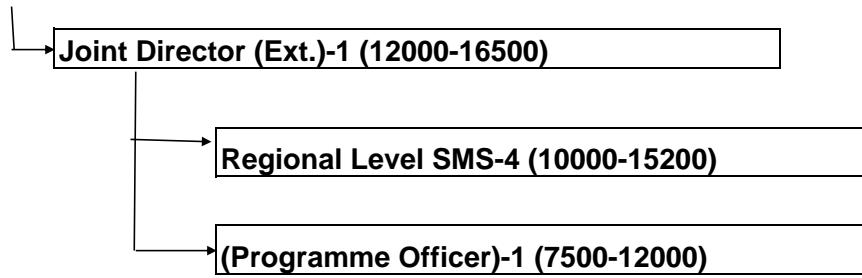
→ **Computer Programmer)-1 (Rs 6700-10900)**

→ **Rat Control Officer-1 (Rs 6700-10900)**

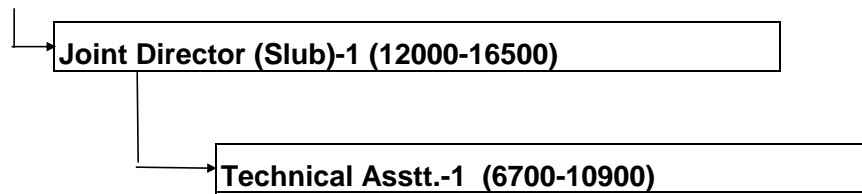
AGRI-INPUT SECTION



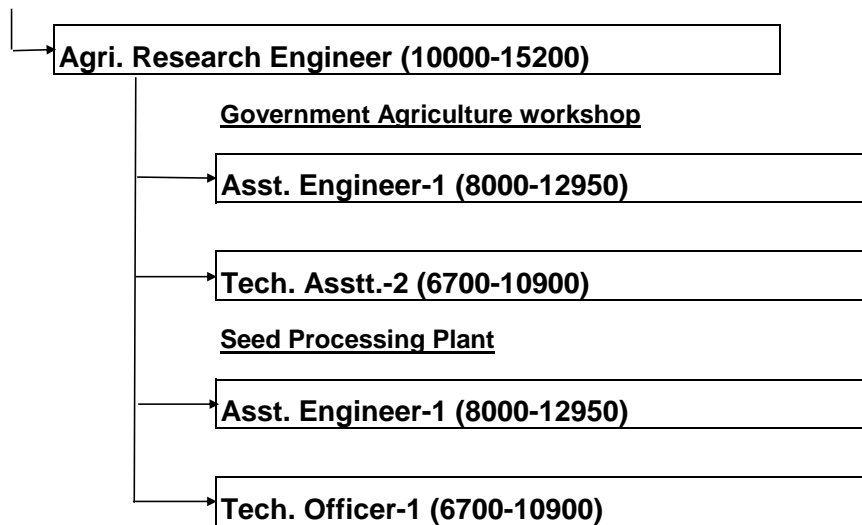
AGRI-EXTENSION SECTION



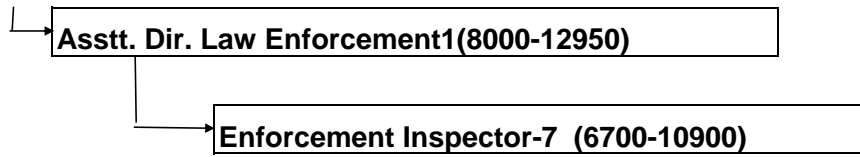
STATE LAND USE BOARD



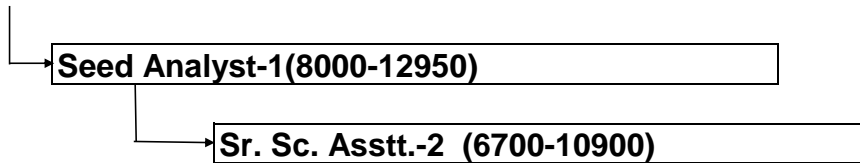
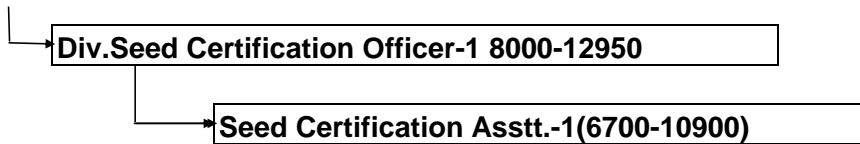
AGRICULTURE ENGINEERING SECTION



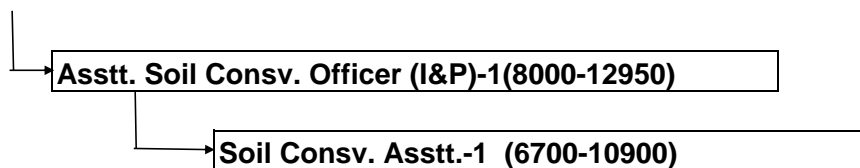
LAW ENFORCEMENT SECTION



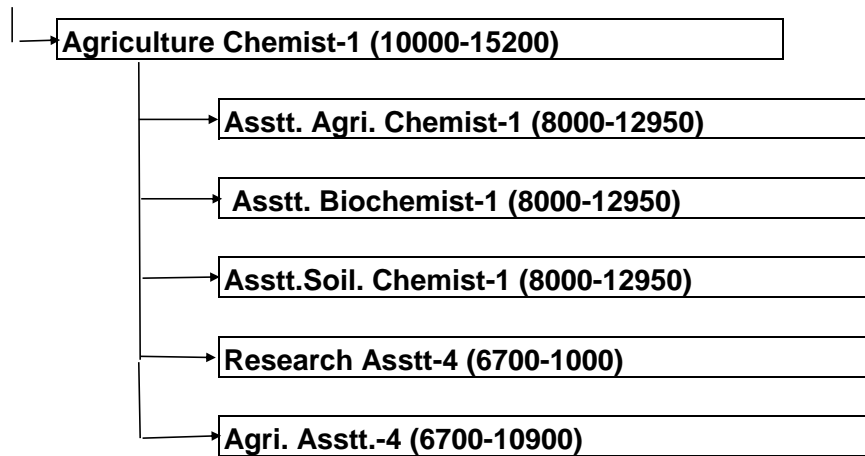
SEED CERTIFICATION SECTION



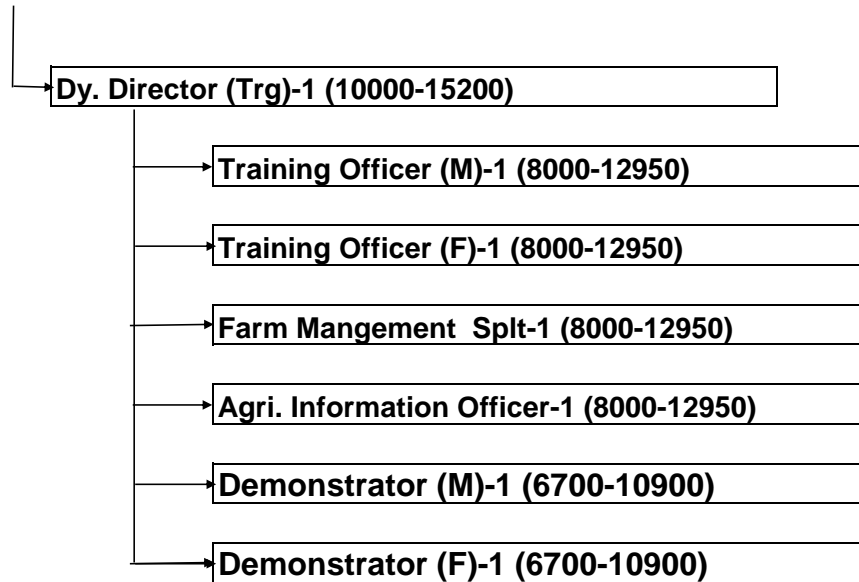
INVESTIGATION & PLANNING (S&WC)



QUALITY CONTROL & SOIL TESTING SECTION



FARMERS TRAINING CENTRE



SOIL SURVEY SECTION

